

SUTCO® SORTING AND TREATMENT PLANTS .

MODULAR CONDITIONING CONCEPT FOR MUNICIPAL SOLID WASTE

**ALL FROM ONE HAND -
FROM CONCEPT TO COMMISSIONING.**



SORTING AND TREATMENT. OUR SPECIALITY.



PERFECT SORTING- AND TREATMENT PLANTS

Sorting and treatment of collected and mixed municipal solid waste

- ▲ with manual system
- ▲ with semi-automatic system
- ▲ with a fully automated system

Biological stabilization and composting

- ▲ with the dynamic system Biofix & Wendelin
- ▲ with the tunnel system
- ▲ with static system

Complex System MBT (Mechanical Biological Treatment)

Plants for the production of RDF/SRF

Plants for the treatment of waste before and after thermal processing



Sutco®-Technology can provide

- ▲ Inexpensive alternatives for thermal disposal
- ▲ Take account of regional differences of waste
- ▲ Recycling income by clean separation and baling of recyclables
- ▲ RDF / SRF for recovery
- ▲ Composting to stabilize and use
- ▲ Fermentation for power generation
- ▲ Minimization of the deposit (remaining amount)

HOUSEHOLD WASTE

is waste which is collected in a mixed and unsorted manner. Approx. 250 kg of household waste is generated in the European households per capita every year. Household waste mainly contains materials, such as:

- ▲ organic waste (garden and kitchen waste)
- ▲ mineral material
- ▲ paper / cardboard
- ▲ plastics
- ▲ textiles
- ▲ glass
- ▲ metals
- ▲ leather
- ▲ wood
- ▲ rubber

... and others.

Household waste sorting and treatment systems from Sutco are designed according to the customer's requirements. Using the throughput, the composition of waste and the customer's objectives Sutco can prepare an appropriate concept: to offer systems with mainly manual solutions which can be extended to include a fully automatic system.

Thanks to the excellent sorting technology, Sutco systems can achieve a high output of fractions of valuable material from the household waste. Using trommel screens, magnetic technology, ballistic separators and near-infrared devices (NIR) and/or manual sorting processes, the material is sorted to form different fractions.

The material (metals, cardboard, plastics etc.) which is sorted out is subjected to further processing or is converted to form substitutive fuel which is processed by a shredder to form a marketable fraction. The organic fraction which was screened is treated in further processes by the Sutco BIOFIX composting process or by our partner who can offer simple and suitable composting technologies. The material is either treated or dried as filling material and/or used as substitutive fuel. In addition, the material can be converted to new energy together with our partners. Biomethanation processes can be used to produce biogas which is converted into electricity by a combined heat and power unit. The residual organic material will be treated in composting processes.



***"Best recyclables in waste.
The proper technology creates an alternative source of energy."***

HOUSEHOLD WASTE CONCEPT IN 5 DIFFERENT MODULES.

AUTOMATIC SEPARATION IN CONNECTION WITH A HIGH THROUGHPUT AND A BETTER SORTING PURITY.



MODULE 1. (M1)

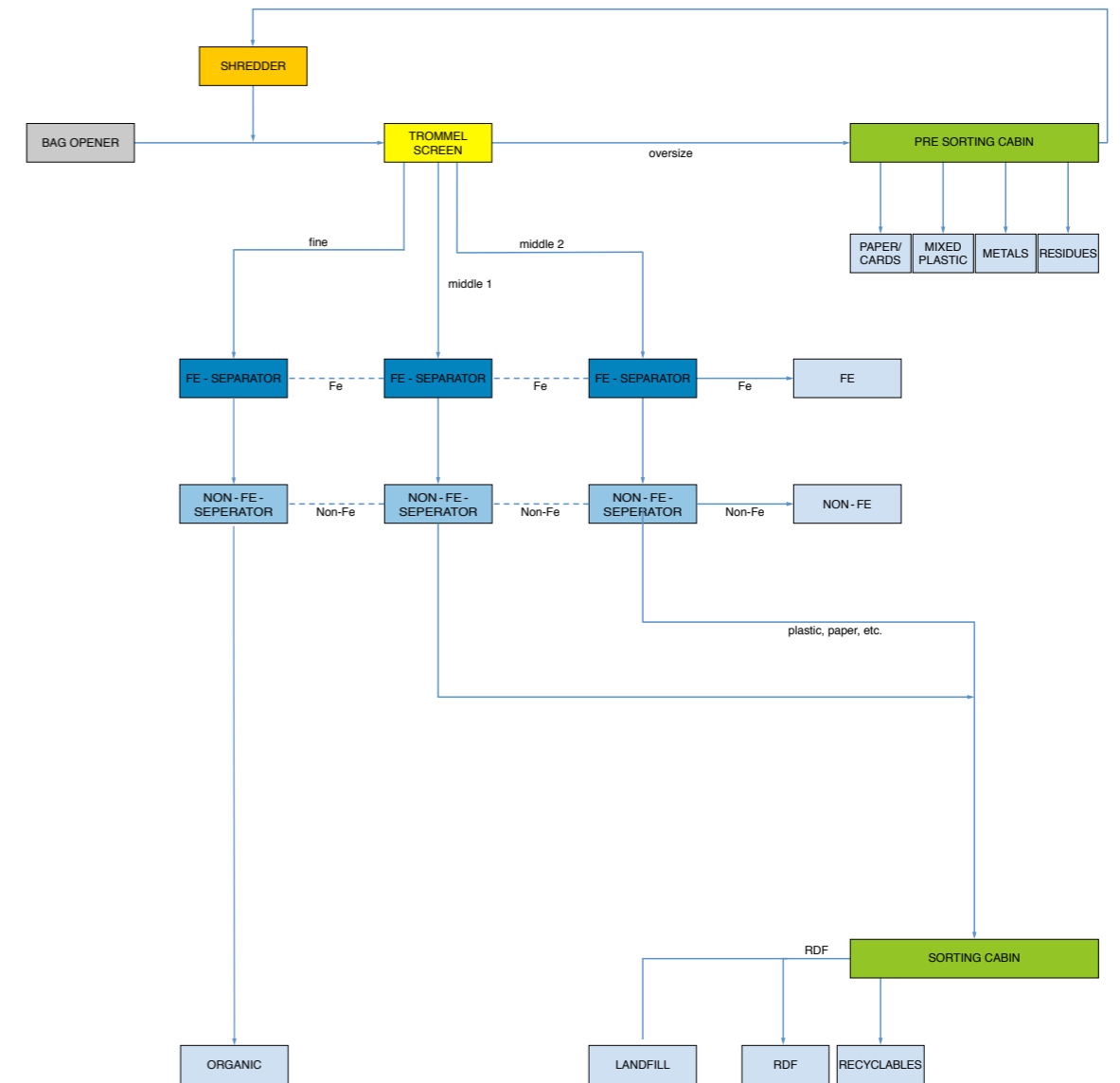
MODULE 2. (M2)

MODULE 3. (M3)

MODULE 4. (M4)

MODULE 5. (M5)

SIMPLE TYPE - WITH MANUAL SORTING



REFERENCE

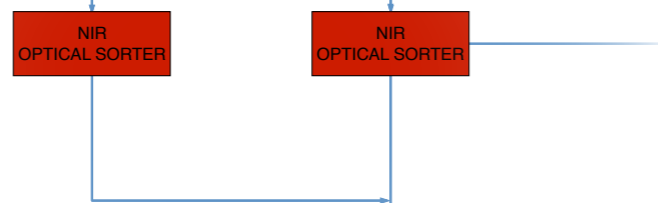
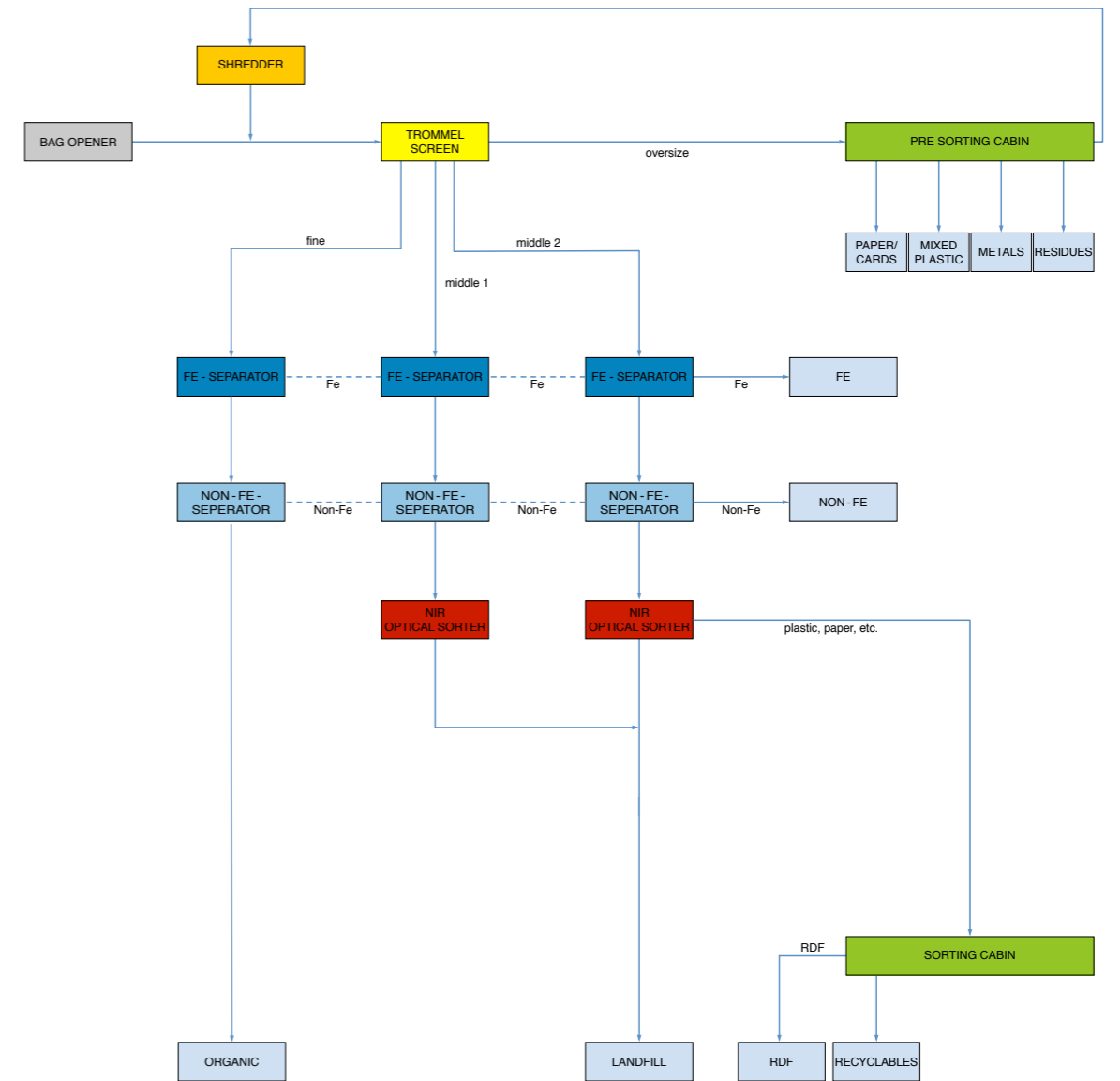
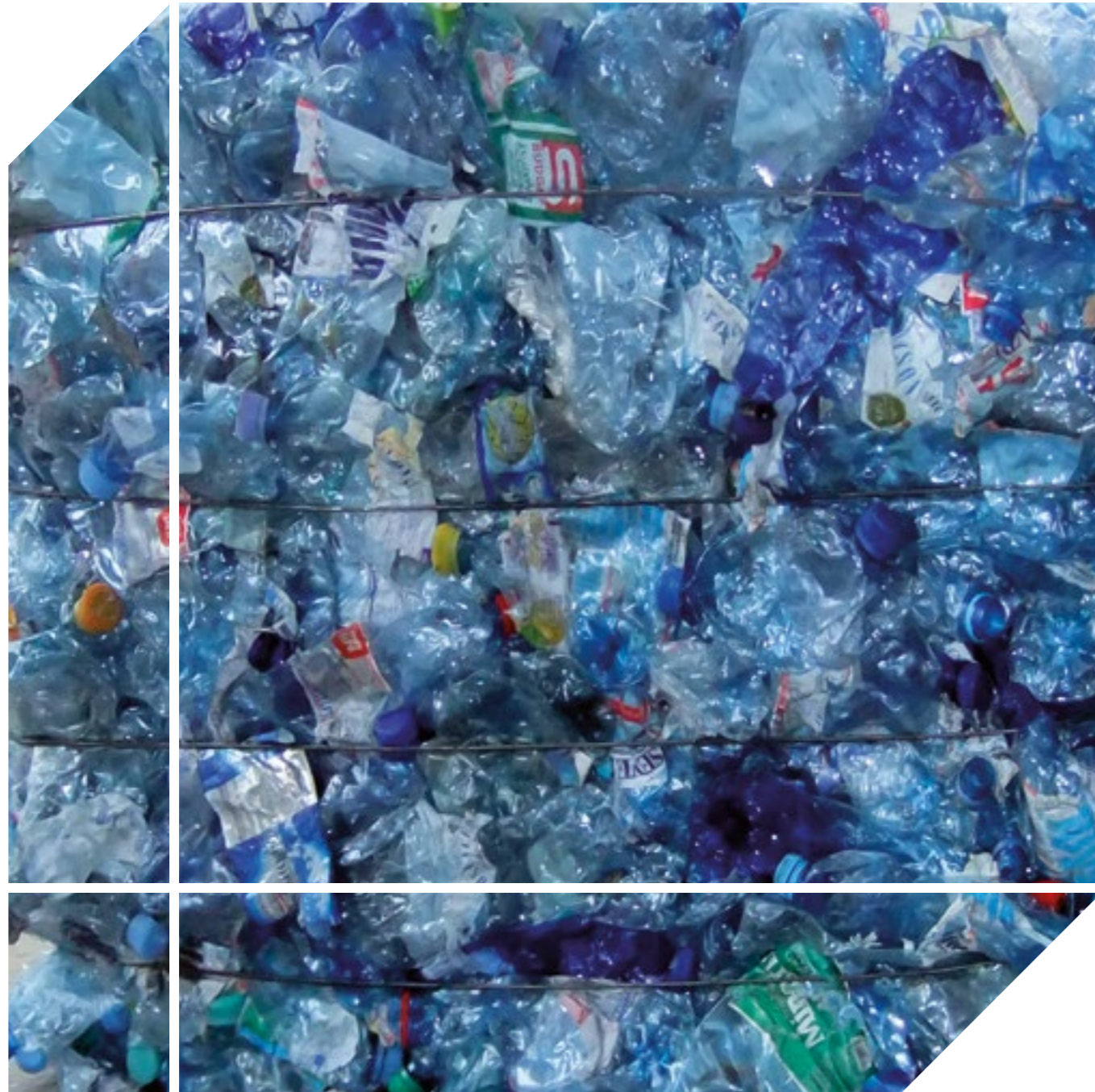
Example of sorting plant with manual system

MPO ŁÓDŹ LUBLINEK, POLAND

Capacity: 82,000 Mg/a



SEMI-AUTOMATIC SYSTEM



REFERENCE

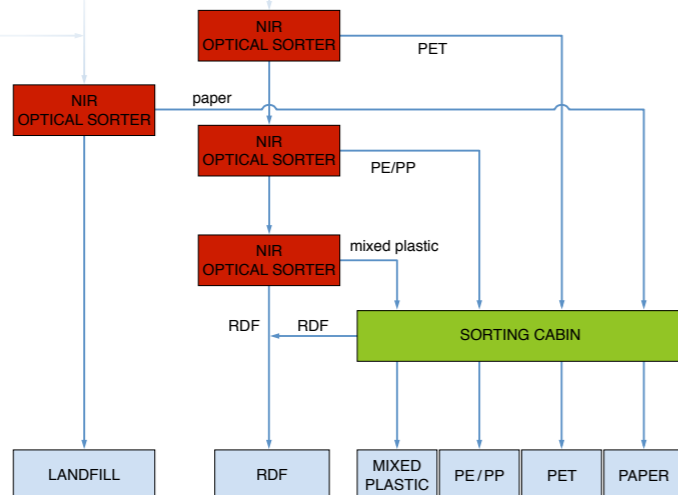
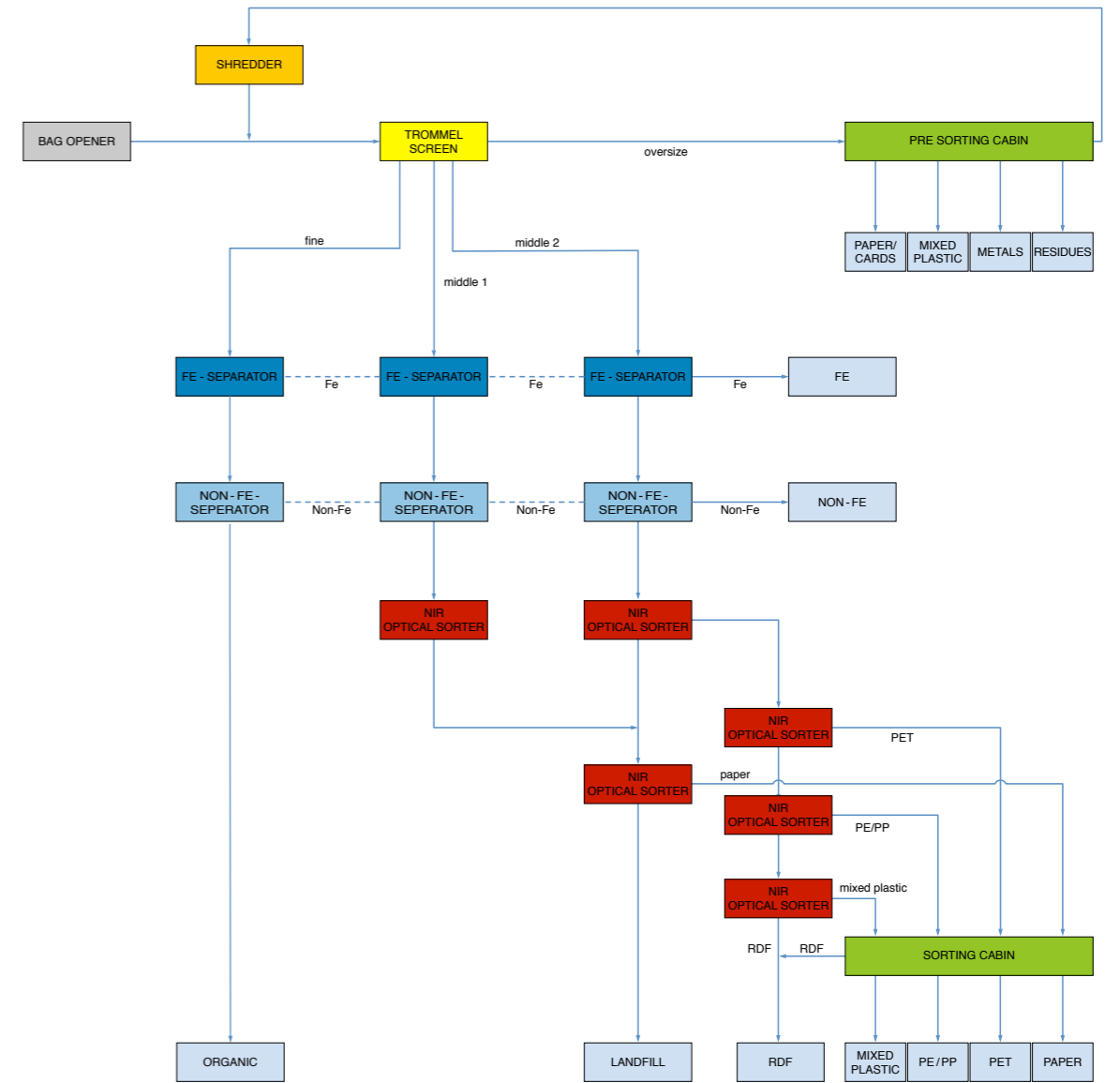
Example of sorting plant with semi-automatic system

MBP ZZO SIERZNIK/BYTOWA, POLAND

Capacity: 40,000 Mg/a



AUTOMATIC SORTING PLANT



REFERENCE

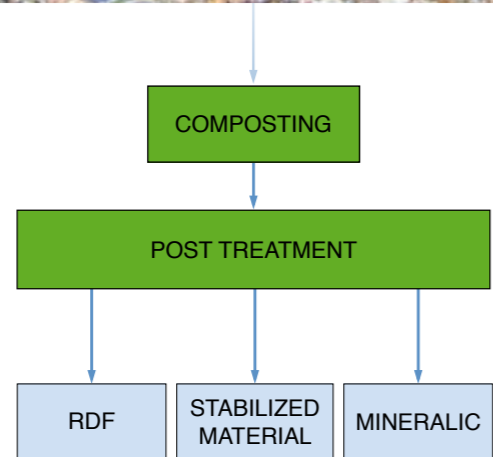
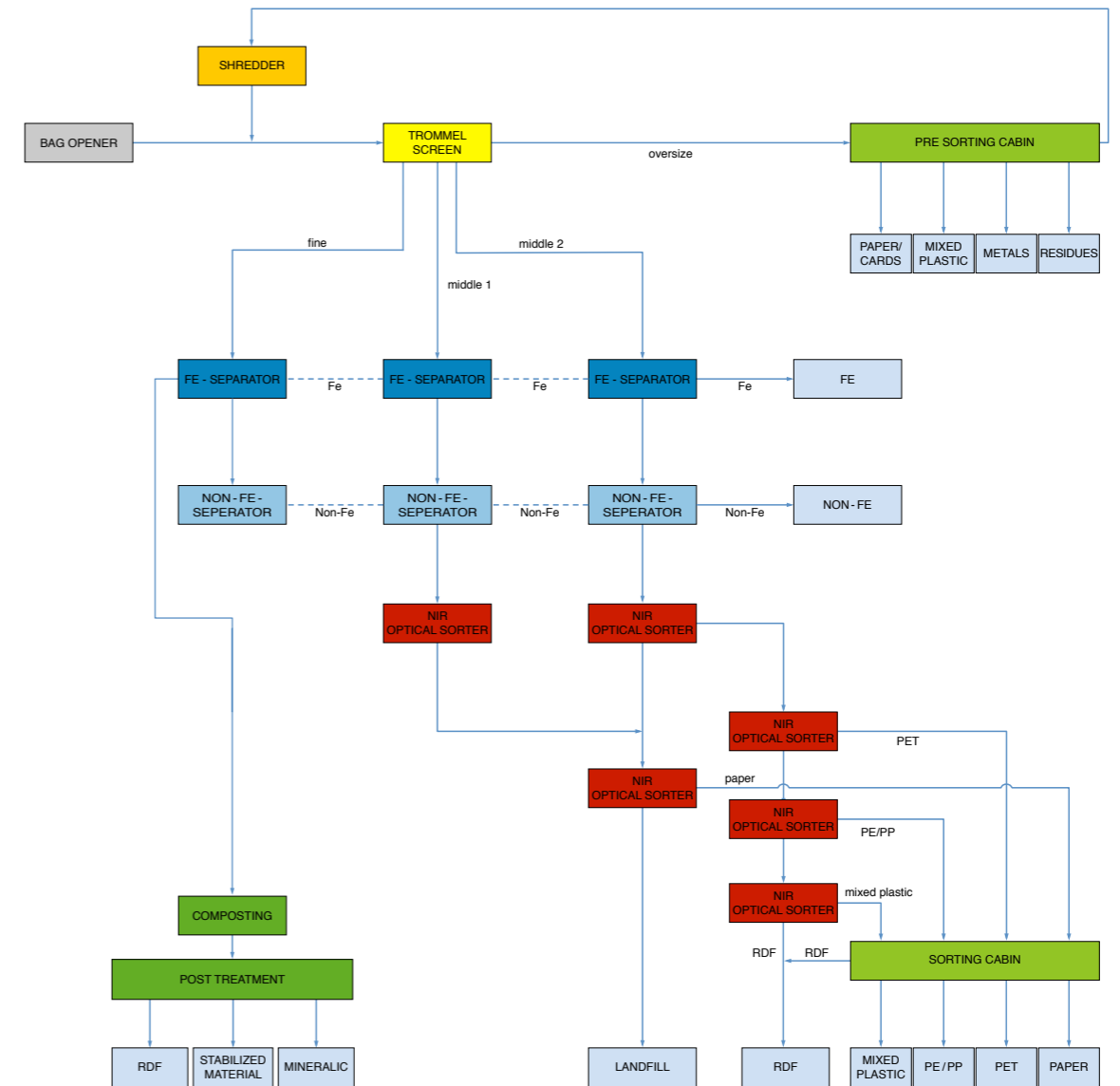
Example of sorting plant with automatic system

BIELSKO-BIAŁA, POLAND

Capacity: 70,000 Mg/a



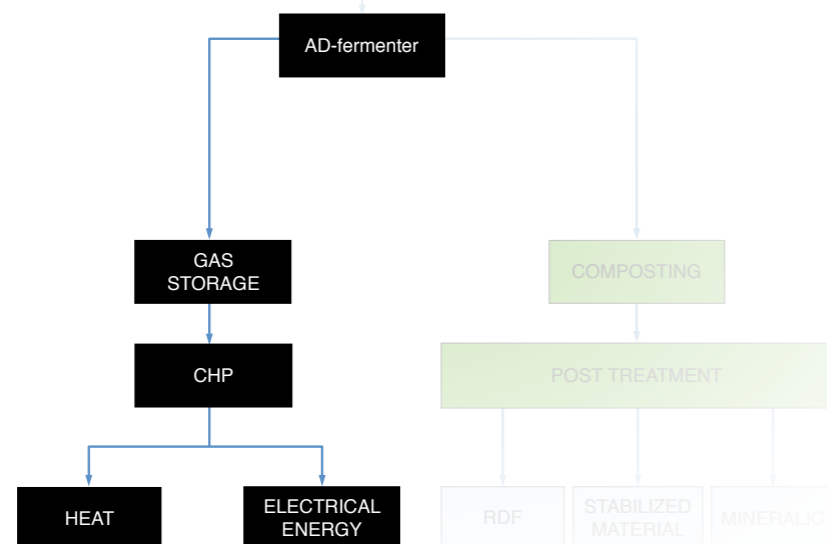
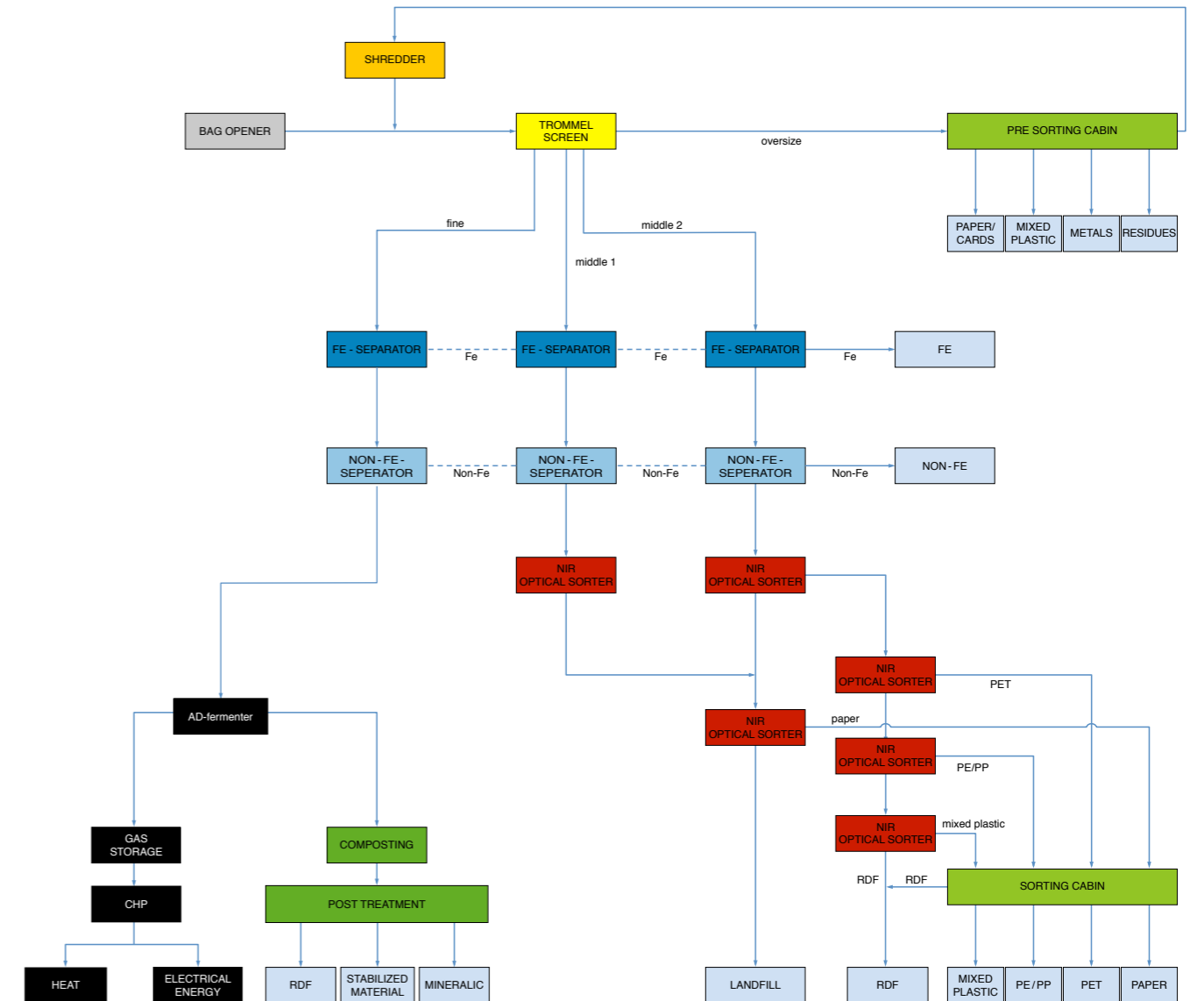
AUTOMATIC SORTING PLANT WITH BIOLOGICAL TREATMENT



REFERENCE
 Example of sorting plant with biological treatment system (BIOFIX)
MBA KIELCE, POLAND
 Capacity:
 Sorting plant: 29 Mg/h
 Composting plant: 25,000 Mg/a



WASTE TO ENERGY





Sutco® RecyclingTechnik GmbH

Paffrather Str. 102-116, 51465 Bergisch Gladbach, Germany

Telefon +49 2202 2005 01

E-Mail info@sutco.de

Web www.sutco.com

WE GET THE BEST OUT.

