

SUTCO® SORTING AND TREATMENT PLANTS .

## **SORTING SYSTEMS FOR PACKAGING WASTE**

**ALL FROM ONE HAND -  
FROM CONCEPT TO THE COMMISSIONING.**





**PACKAGING WASTE**

Such a dual system is operated by the Duales System Deutschland GmbH, for example. The Green Dot is their brand label, which may also be used by competitors according to the EU Commission as of April 20, 2001.

This system was established to avoid the logistic and hygienic problems of a taking-back in trade as a result of the taking-back obligation.

Sutco sorting systems separate this waste to recycle materials by mechanical and automatic sorting methods and to form fractions of them as well.

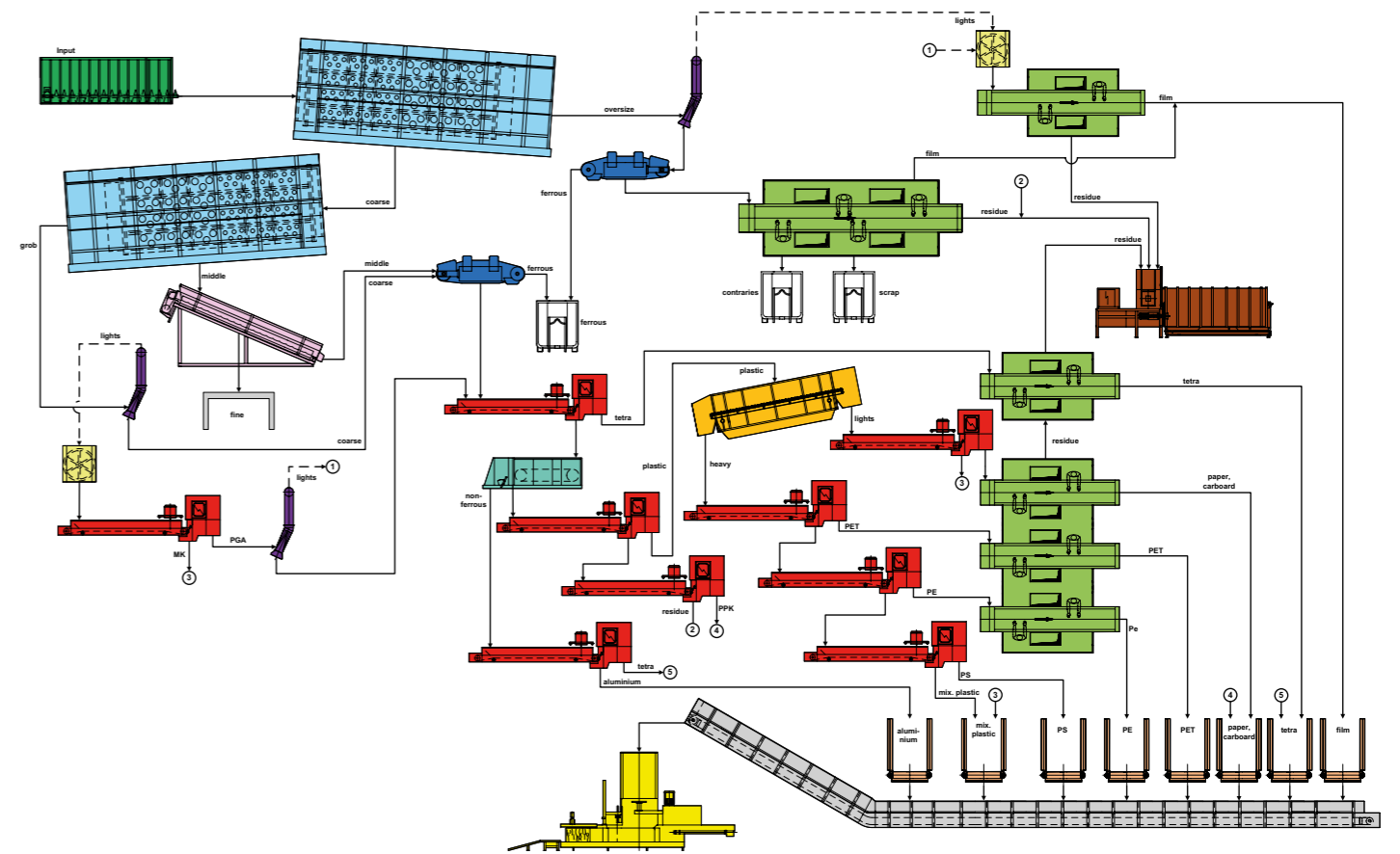
Key units such as bag openers, trommel screens (sorting of material by size), wind sifter (separation by weight), ballistic separators (tabular-light and heavy-rolling) magnets and eddy current separators sort the packaging waste and use the near infrared devices for fractioning.

Thanks to the qualitative combination of the equipment used the Sutco sorting systems achieve a high degree of purity and thus allow the marketing of exactly sorted fractions which can sold well as high-quality secondary raw materials.

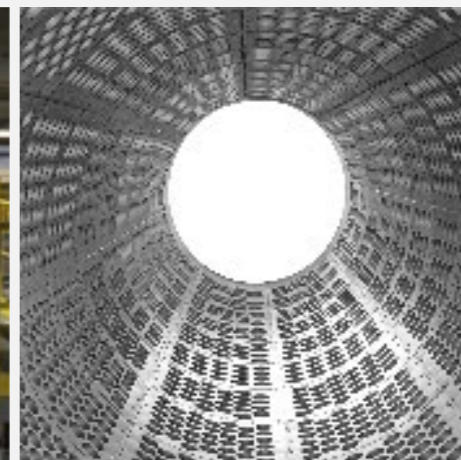
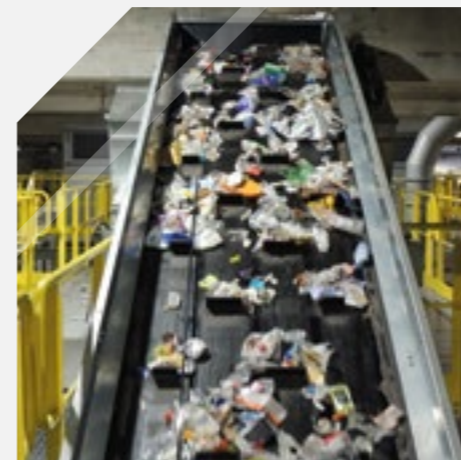


**EXAMPLE: SORTING SYSTEM FOR LIGHT-WEIGHT PACKAGING WASTE**

**INPUT: 12 Mg/h**



- ▲ Bag opener
- ▲ Overband magnet
- ▲ Separator for non-ferrous metals
- ▲ Press container
- ▲ Chain conveyor
- ▲ Trommel screen
- ▲ Air knife
- ▲ Ballistic separator
- ▲ Rotary feeder
- ▲ Baler
- ▲ Screen fine
- ▲ NIR-Sensor
- ▲ Picking cabin
- ▲ Bunker belt



## PACKAGING WASTE

In case of recyclable materials a distinction is made between the packaging waste identified by e.g. the Green Dot (Germany), Eco Emballages (France), Val-pack (England) and other 22 European countries, i.e. packaging waste collected in bags, barrels or recyclable material containers, and the recyclable material collected by the communities or third parties entrusted with the collection. These materials are mainly packaging waste:

- ▲ PAPER & CARDBOARD
- ▲ CARTONS
- ▲ GLASS
- ▲ LIGHT-WEIGHT PACKAGINGS (packaging material of plastics, metals and compounds).

## SOME REFERENCES

### SORTING SYSTEMS FOR LIGHT-WEIGHT PACKAGING

#### LVP-SORTING SYSTEM ISERLOHN

Site	Iserlohn, Germany
Plant	Automatical sorting system for packaging waste
Throughput	18 Mg/h
Customer	Lobbe, Iserlohn, Germany

#### AUTOMATIC SORTING PLANT SINGAPORE

Site	Singapore
Plant	Sorting plant
Throughput	10 Mg/h
Customer	Colex, Singapore

#### LVP-SORTING SYSTEM BOCHUM

Site	Bochum, Germany
Plant	Sorting of light-weight packagings
Throughput	12 Mg/h
Customer	Remondis, Lünen, Germany



#### SORTING PLANT FOR PACKAGING WASTE MOTALA

Site	Motala, Sweden
Plant	Sorting plant
Throughput	20 Mg/h
Customer	FTI, Sweden

#### SORTING PLANT FOR LIGHT WEIGHT PACKAGING GERNSHEIM

Site	Gernsheim, Germany
Plant	Sorting plant for light weight packaging
Throughput	21 Mg/h
Customer	Meilo, Gernsheim, Germany

#### SORTING PLANT FOR PACKAGING WASTE SWISTTAL

Site	Swisttal, Germany
Plant	LVP Sortieranlage
Throughput	21 Mg/h
Customer	Hündgen, Swisttal, Germany



Sutco® RecyclingTechnik GmbH

Paffrather Str. 102-116, 51465 Bergisch Gladbach, Germany

Telefon +49 2202 2005 01

Web [www.sutco.com](http://www.sutco.com)

E-Mail [info@sutco.de](mailto:info@sutco.de)

WE GET THE BEST OUT.

